



MONTHLY MEMBERSHIP PROGRESS REPORT

District 5M 4

Results as of: 04/30/2018

GMT: MICHAEL MOLENDIA

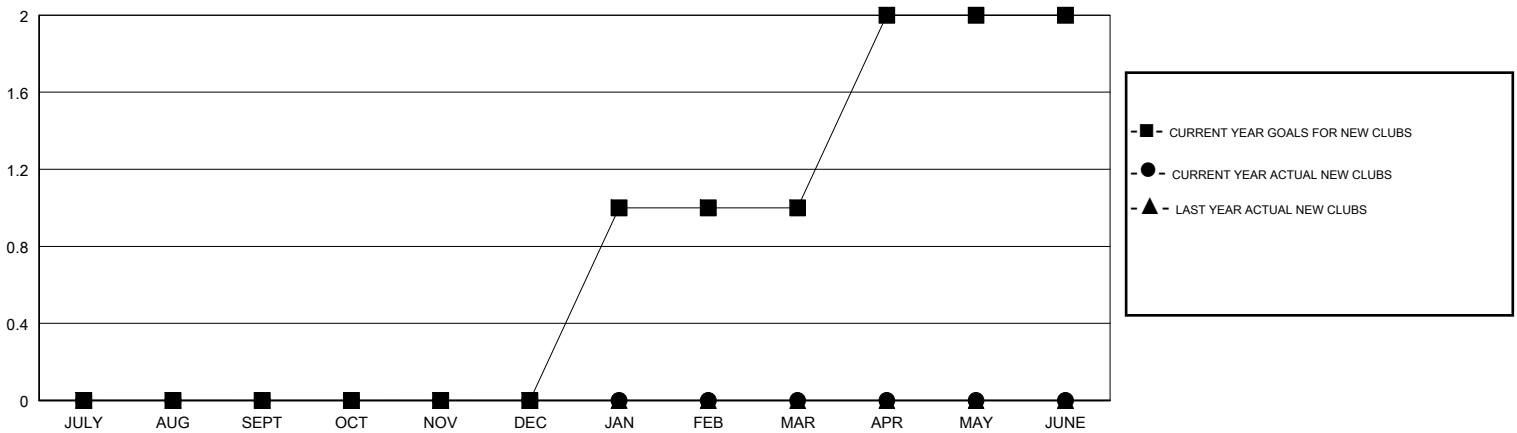
LOCATION MINNESOTA

GMT CA

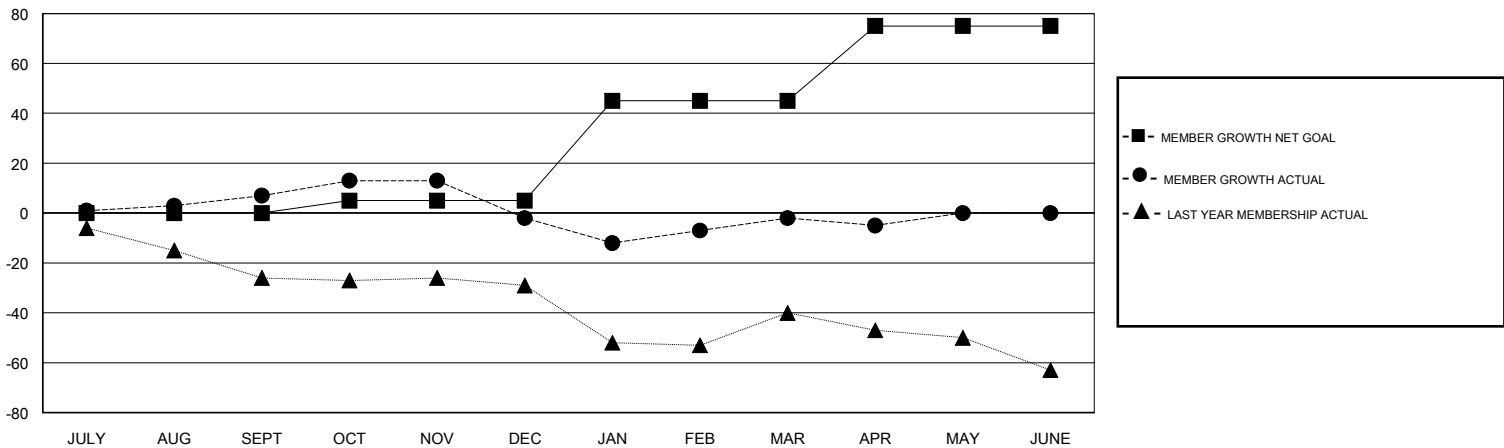
Clubs			
RESULTS FOR 2017-2018			
QUARTER	NEW CLUB GOAL	NEW CLUBS	DROPPED CLUBS
JULY/AUG/SEPT	0	0	0
OCT/NOV/DEC	0	0	1
JAN/FEB/MAR	1	0	0
APR/MAY/JUNE	1	0	0

Members			
RESULTS FOR 2017-2018			
QUARTER	MEMBER GROWTH NET GOAL	MEMBER GROWTH ACTUAL	DROPPED MEMBERS ACTUAL (including transfers)
JULY/AUG/SEPT	0	30	20
OCT/NOV/DEC	5	41	50
JAN/FEB/MAR	40	39	35
APR/MAY/JUNE	30	8	11

GOALS AND ACTUAL NEW CLUBS CUMULATIVE



GOALS AND ACTUAL MEMBERS CUMULATIVE



DROPPED CLUBS: 1	31 CLUBS OF 56 ADDED 1 OR MORE NEW MEMBERS	<u>GENDER DISTRIBUTION</u> MALE 1,142 (74.49%) FEMALE 391 (25.51%) Women Percentage Fiscal Year Goal: 29%
<u>DROPPED MEMBERS</u> DECEASED 23 CLUB CANCELLED 0 OTHER 93 TOTAL 116	CLICK HERE FOR CUMULATIVE MEMBERSHIP DATA	TOTAL FAMILY UNIT MEMBERS 371 FAMILY MEMBERS PAYING HALF DUES 187